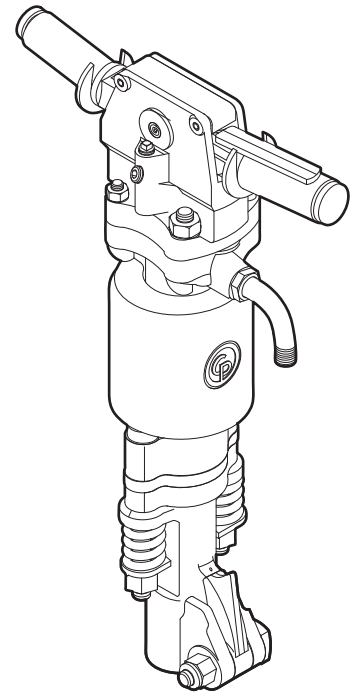




**Chicago
Pneumatic**

Spare parts list

**Handheld pneumatic breakers
CP 1240, CP 1240 S, CP 1240 SVR**



Contents

- General information** 5
- Spare parts list** 6
 - CP 1240 6
 - CP 1240 S 8
 - CP 1240 SVR 12
- Working tools** 15
 - ISO standard hexagon 28 x 160 mm (1 1/8 in. x 6 1/4 in.) 15
 - ISO standard hexagon 32 x 160 mm (1 1/4 in. x 6 1/4 in.) 16
 - US standard hexagon 1 1/8 in. x 6 in. (28 x 152 mm) 16
 - US standard hexagon 1 1/4 in. x 6 in. (32 x 152 mm) 17
- Accessories** 18
 - Hose rolls 18
 - Pre-mounted universal hoses with claw couplings 18
 - Water separator 19
 - Lubricator 19
 - CP airolene plus tool oil 19

General information

This spare parts list applies to the following:

Description

Handheld pneumatic breakers CP 1240 hexagon 1¼ x 6¼ in. (28 x 160 mm)

Handheld pneumatic breakers CP 1240 hexagon 1¼ x 6¼ in. (32 x 160 mm)

Handheld pneumatic breakers CP 1240 S hexagon 1¼ x 6¼ in. (28 x 160 mm)

Handheld pneumatic breakers CP 1240 S hexagon 1¼ x 6¼ in. (32 x 160 mm)

Handheld pneumatic breakers CP 1240 SVR hexagon 1¼ x 6¼ in. (28 x 160 mm)

Handheld pneumatic breakers CP 1240 SVR hexagon 1¼ x 6¼ in. (32 x 160 mm)

Use only authorized parts. Any damage or malfunction caused by the use of unauthorized parts is not covered by Warranty or Product Liability. Any unauthorized use or copying of the contents or any part thereof is prohibited. This applies in particular to trademarks, model denominations, part numbers, and drawings.

Instructions for use

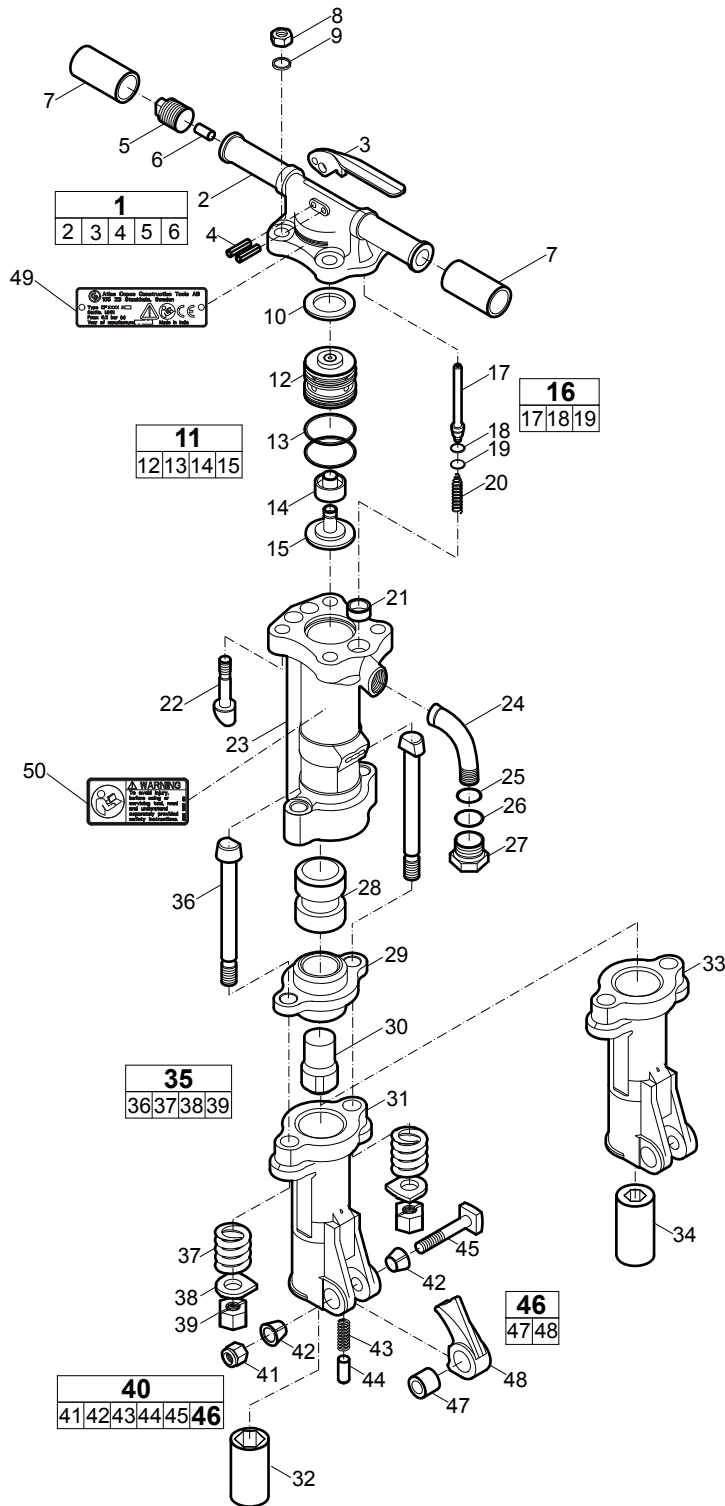
This spare parts list contains no safety regulations and is merely intended to assist in the ordering of spare parts.

For information about operating, servicing, or repairing, the relevant Safety and operating instructions must be consulted at all costs.

Please observe the safety instructions listed in the relevant Safety and operating instructions!

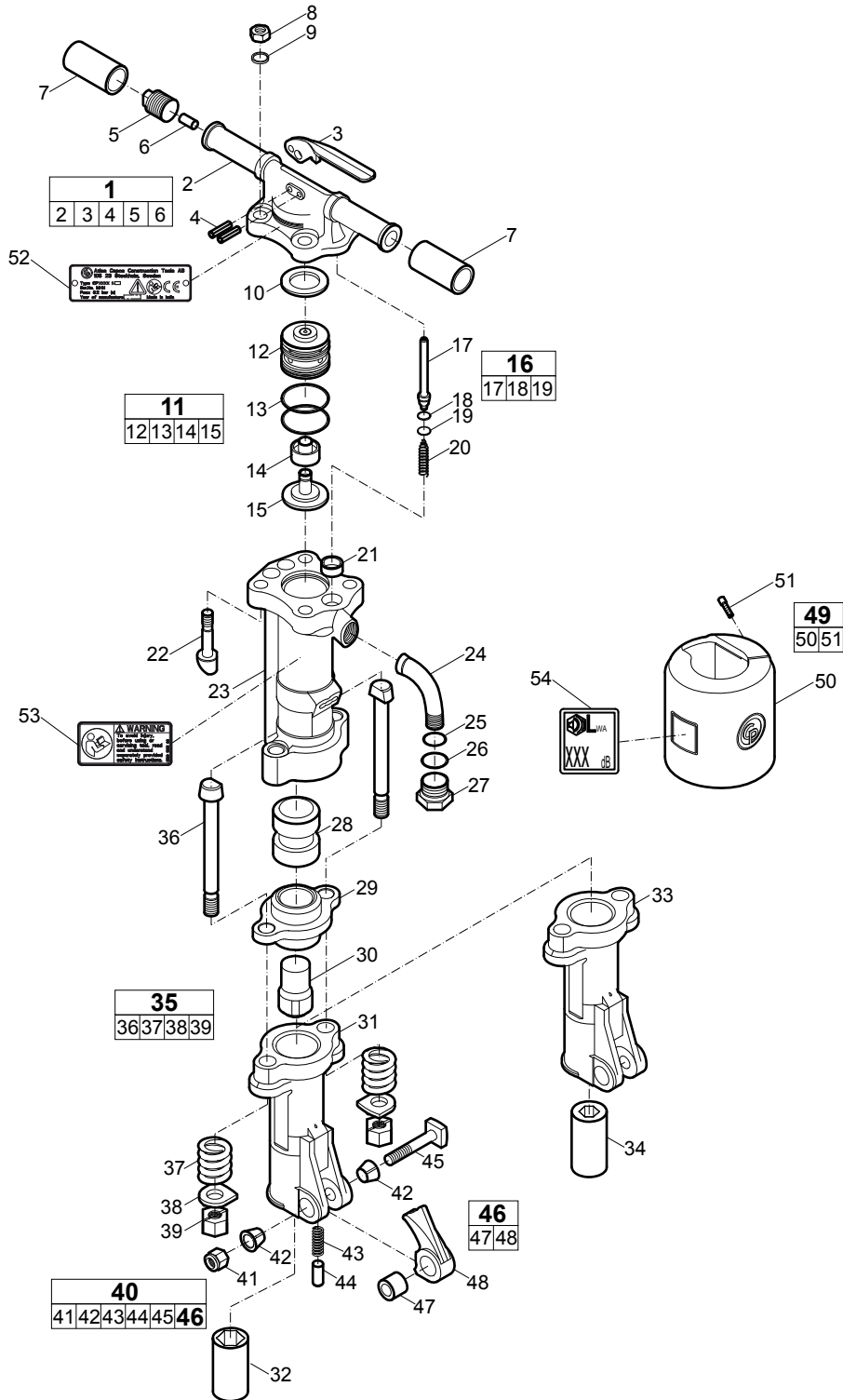
Spare parts list

CP 1240



No.	Description	Remark	Quantity	Part number
1(2-6)	Backhead, complete		1	F815126
2	Backhead		1	-
3	Lever - throttle		1	F814725
4	Pin - spiro		2	R133433
5	Plug - oil		1	R075031
6	Plug - oil regulator		1	C036901
7	Grip - rubber		2	F816345
8	Nut	Hexagon	4	R003069
9	Lock washer		4	R000550
10	Washer - take up		1	R085259
11(12-15)	Valve case, complete		1	R122977
12	Case - valve		1	R092904
13	O-ring		2	P083094
14	Valve		1	R122975
15	Guide - valve		1	R122976
16(17-19)	Valve - throttle, complete		1	R092894
17	Valve - throttle		1	-
18	Seal - throttle valve		1	R098368
19	Ring - valve seal retaining		1	R098369
20	Spring - throttle valve		1	R005717
21	Seal - cylinder		1	R047965
22	Bolt - backhead		4	R092896
23	Cylinder		1	-
24	Swivel - air inlet		1	R085269
25	O-ring		1	R110317
26	O-ring		1	P103521
27	Nut - inlet swivel		1	R000530
28	Piston		1	R000127
29	Bushing - anvil block		1	R092907
30	Block - anvil		1	R096123
31	Fronthead	Hexagon, 1 x ¼ in. (32 mm)	1	R092918
32	Bushing - fronthead	Hexagon, 1 x ¼ in. (32 mm)	1	R040635
33	Fronthead	Hexagon, 1 x ⅛ in. (28 mm)	1	R092917
34	Bushing - fronthead	Hexagon, 1 x ⅛ in. (28 mm)	1	R090122
35(36-39)	Side bolt, complete		1	3303 0050 57
36	Bolt - fronthead		2	F037790
37	Spring - fronthead		2	R092915
38	Lock - fronthead nut		2	R096059
39	Nut - fronthead bolt		2	F037789
40(41-45,46)	Latch, complete		1	3303 0050 55
41	Lock nut		1	P008999
42	Bushing - retainer bolt		2	R076562
43	Spring - plunger		1	R092911
44	Plunger - latch		1	R092910
45	Bolt - latch		1	R076853
46(47-48)	Latch - retainer, complete		1	R092909
47	Bushing		1	R050894
48	Latch - retainer		1	-
49	Data plate		1	-
50	Safety label		1	3310 1602 00

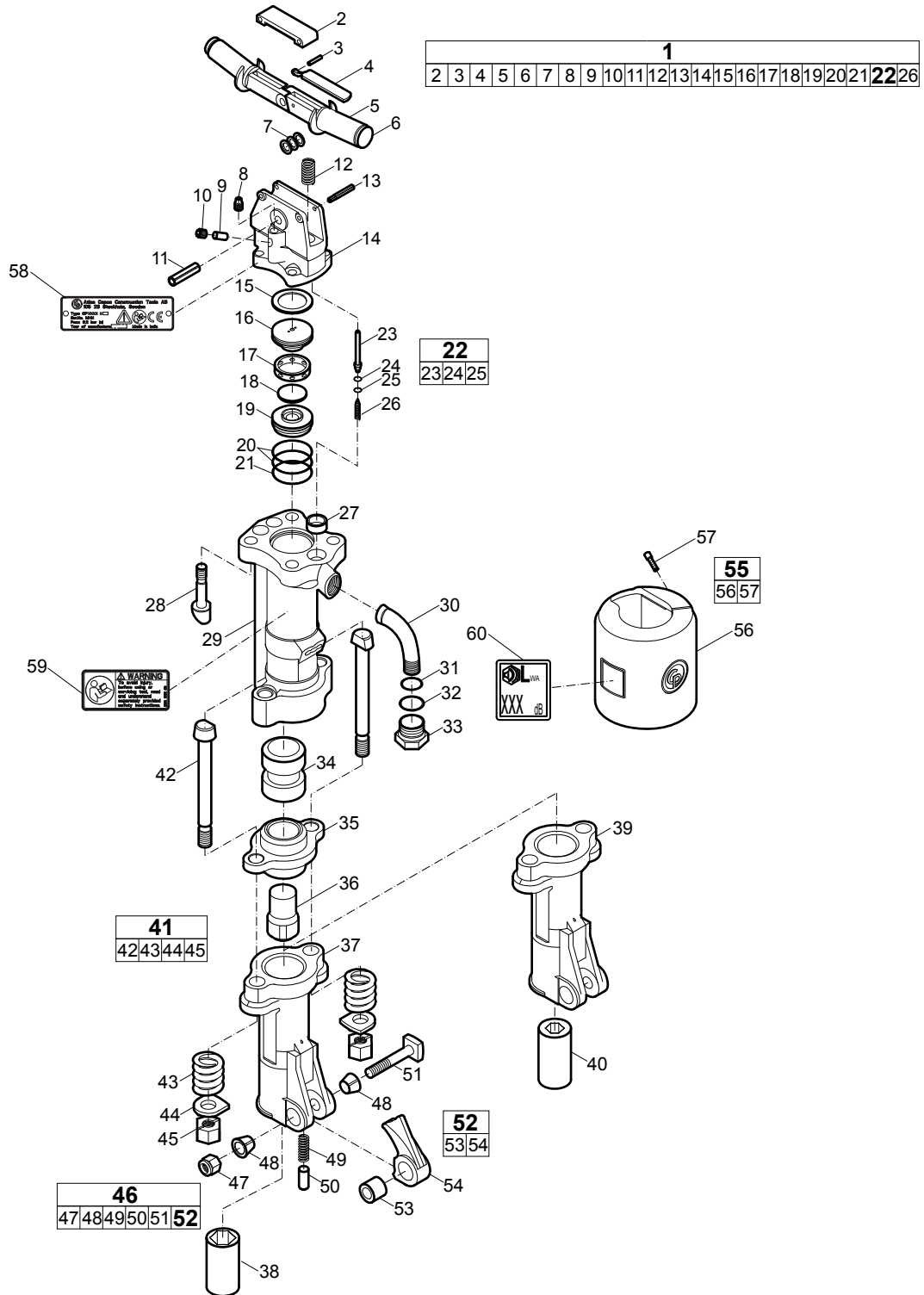
CP 1240 S



No.	Description	Remark	Quantity	Part number
1(2-6)	Backhead, complete		1	F815126
2	Backhead		1	-
3	Lever - throttle		1	F814725
4	Pin - spirol		2	R133433
5	Plug - oil		1	R075031
6	Plug - oil regulator		1	C036901
7	Grip - rubber		2	F816345
8	Nut	Hexagon	4	R003069
9	Lock washer		4	R000550
10	Washer - take up		1	R085259
11(12-15)	Valve case, complete		1	R122977
12	Case - valve		1	R092904
13	O-ring		2	P083094
14	Valve		1	R122975
15	Guide - valve		1	R122976
16(17-19)	Valve - throttle, complete		1	R092894
17	Valve - throttle		1	-
18	Seal - throttle valve		1	R098368
19	Ring - valve seal retaining		1	R098369
20	Spring - throttle valve		1	R005717
21	Seal - cylinder		1	R047965
22	Bolt - backhead		4	R092896
23	Cylinder		1	-
24	Swivel - air inlet		1	R085269
25	O-ring		1	R110317
26	O-ring		1	P103521
27	Nut - inlet swivel		1	R000530
28	Piston		1	R000127
29	Bushing - anvil block		1	R092907
30	Block - anvil		1	R096123
31	Fronthead	Hexagon, 1 x ¼ in. (32 mm)	1	R092918
32	Bushing - fronthead	Hexagon, 1 x ¼ in. (32 mm)	1	R040635
33	Fronthead	Hexagon, 1 x ⅛ in. (28 mm)	1	R092917
34	Bushing - fronthead	Hexagon, 1 x ⅛ in. (28 mm)	1	R090122
35(36-39)	Side bolt, complete		1	3303 0050 57
36	Bolt - fronthead		2	F037790
37	Spring - fronthead		2	R092915
38	Lock - fronthead nut		2	R096059
39	Nut - fronthead bolt		2	F037789
40(41-45,46)	Latch, complete		1	3303 0050 55
41	Lock nut		1	P008999
42	Bushing - retainer bolt		2	R076562
43	Spring - plunger		1	R092911
44	Plunger - latch		1	R092910
45	Bolt - latch		1	R076853
46(47-48)	Latch - retainer, complete		1	R092909
47	Bushing		1	R050894
48	Latch - retainer		1	-

No.	Description	Remark	Quantity	Part number
49(50-51)	Muffler, complete		1	K3206448
50	Hood - muffler		1	-
51	Screw - allen cap		4	R117415
52	Data plate		1	-
53	Safety label		1	3310 1602 00
54	Noise level label		1	-

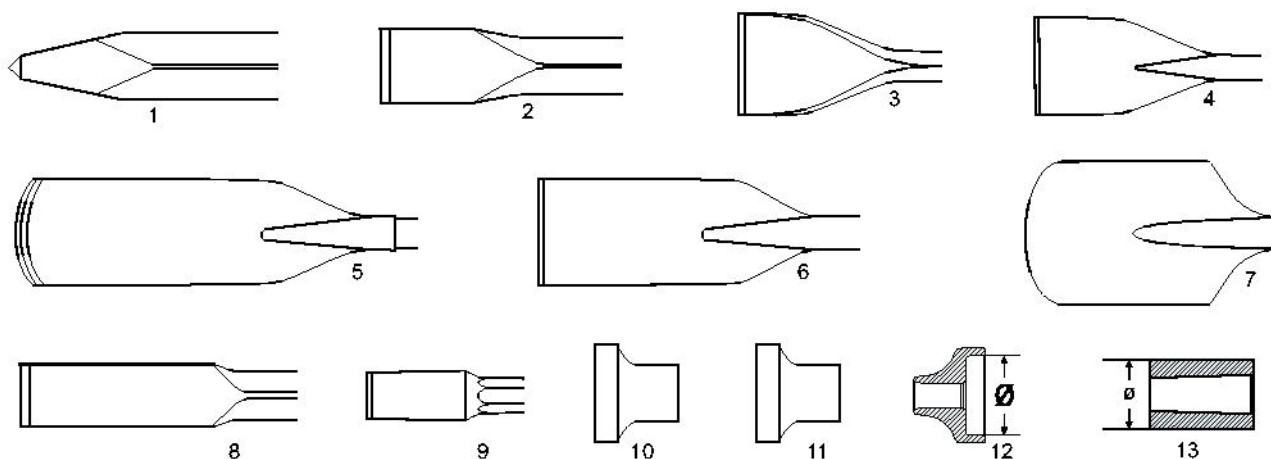
CP 1240 SVR



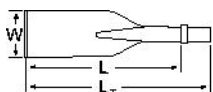
No.	Description	Remark	Quantity	Part number
1(2-21,22,26)	Backhead, complete		1	R145778
2	Cover - buffer		1	R157669
3	Pin - lever		1	R145866
4	Lever		1	R145781
5	Grip		2	R145788
6	Handle		2	R146841
7	Steel washer		3	R145861
8	Oil - plug	Square head	1	R004975
9	Plug - oil regulator		1	C036901
10	Plug		1	Q3217400
11	Pin - roll		1	0108 1535 00
12	Spring		2	R147757
13	Pin - stepped		2	R157670
14	Backhead		1	-
15	Gasket		1	R147756
16	Upper valve lid		1	R138490
17	Valve case		1	R138489
18	Valve		1	R138488
19	Lower valve lid		1	R145787
20	O-ring		2	R137341
21	O-ring		1	R154983
22(23-25)	Throttle valve, complete		1	R145782
23	Throttle valve		1	-
24	Seal - throttle valve		1	R098368
25	Ring - valve seal retaining		1	R098369
26	Spring - throttle valve		1	R005717
27	Seal - cylinder		1	R047965
28	Bolt - backhead		4	R092896
29	Cylinder		1	-
30	Swivel - air inlet		1	R085269
31	O-ring		1	R110317
32	O-ring		1	P103521
33	Nut - inlet swivel		1	R000530
34	Piston		1	R000127
35	Bushing - anvil block		1	R092907
36	Block - anvil		1	R096123
37	Fronthead	Hexagon, 1 x ¼ in. (32 mm)	1	R092918
38	Bushing - fronthead	Hexagon, 1 x ¼ in. (32 mm)	1	R040635
39	Fronthead	Hexagon, 1 x ⅜ in. (28 mm)	1	R092917
40	Bushing - fronthead	Hexagon, 1 x ⅜ in. (28 mm)	1	R090122
41(42-45)	Side bolt, complete		1	3303 0050 57
42	Bolt - fronthead		2	F037790
43	Spring - fronthead		2	R092915
44	Lock - fronthead nut		2	R096059
45	Nut - fronthead bolt		2	F037789

No.	Description	Remark	Quantity	Part number
46(47-51,52)	Latch, complete		1	3303 0050 55
47	Lock nut		1	P008999
48	Bushing - retainer bolt		2	R076562
49	Spring - plunger		1	R092911
50	Plunger - latch		1	R092910
51	Bolt - latch		1	R076853
52(53-54)	Latch - retainer, complete		1	R092909
53	Bushing		1	R050894
54	Latch - retainer		1	-
55(56-57)	Muffler, complete		1	K3206448
56	Hood - muffler		1	-
57	Screw - allen cap		4	R117415
58	Data plate		1	-
59	Safety label		1	3310 1602 00
60	Noise level label		1	-

Working tools

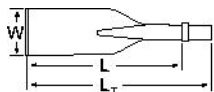


ISO standard hexagon 28 x 160 mm (1 1/8 in. x 6 1/4 in.)



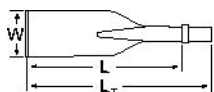
No.	Description	W (mm)	L (mm)	L _T (mm)	Wt (kg)	Part number
1	Moil point	-	380	545	2.8	3083 3271 00
		-	450	615	3.3	3083 3272 00
		-	1000	1165	6.3	3083 3273 00
2	Narrow chisel	32	380	545	2.8	3083 3274 00
		32	450	615	3.3	3083 3275 00
		32	1000	1165	6.3	3083 3276 00
3	Wide chisel	75	380	545	3.1	3083 3277 00
4	Asphalt cutter	115	300	465	3.6	3083 3278 00
5	Digging chisel	75	380	545	4.0	3083 3279 00
6	Digging spade	125	380	545	4.7	3083 3280 00
7	Clay spade	140	380	545	5.4	3083 3281 00
8	Wedge chisel	40	400	565	3.9	3083 3282 00
9	Shaft for tamping pad	-	230	395	2.8	3083 3283 01
10	Tamping pad, round	180	-	-	7.2	3083 3301 00
11	Tamping pad, square	150	-	-	8.3	3083 3302 00
		200	-	-	8.5	3083 3197 00
12	Driving pad	120	-	-	7.6	3376 1120 79
		150	-	-	9.2	3376 1120 77
13	Driver blank	80	-	-	3.4	9245 2827 10

ISO standard hexagon 32 x 160 mm (1¼ in. x 6¼ in.)



No.	Description	W (mm)	L (mm)	L _T (mm)	Wt (kg)	Part number
1	Moil point	-	380	545	3.5	3083 3205 00
		-	450	615	4.0	3083 3206 00
		-	1000	1165	7.6	3083 3207 00
2	Narrow chisel	35	380	545	3.5	3083 3208 00
		35	450	615	4.0	3083 3209 00
		35	1000	1165	7.6	3083 3210 00
3	Wide chisel	75	380	545	3.7	3083 3211 00
4	Asphalt cutter	115	300	465	3.8	3083 3212 00
5	Digging chisel	75	380	545	4.4	3083 3213 00
6	Digging spade	125	380	545	5.1	3083 3214 00
7	Clay spade	140	380	545	5.4	3083 3215 00
8	Wedge chisel	40	400	565	4.1	3083 3216 00
9	Shaft for tamping pad	-	235	400	3.2	3083 3218 01
10	Tamping pad, round	180	-	-	7.2	3083 3301 00
11	Tamping pad, square	150	-	-	8.3	3083 3302 00
		200	-	-	8.5	3083 3197 00
12	Driving pad	120	-	-	7.6	3376 1120 79
		150	-	-	9.2	3376 1120 77
13	Driver blank	80	-	-	3.5	9245 2827 10

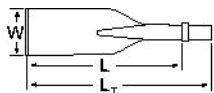
US standard hexagon 1⅛ in. x 6 in. (28 x 152 mm)



No.	Description	W (in.)	L (in.)	L _T (in.)	Wt (lb)	Part number
1	Moil point	-	14	20	5.7	3083 3267 00
		-	18	24	7.3	3083 4015 10
		-	24	30	9.0	3083 4015 20
2	Narrow chisel	1¼	14	20	5.7	3083 3268 00
		1¼	18	24	7.3	3083 4016 10
		1¼	24	30	9.0	3083 4016 20
3	Wide chisel	3	15	21	6.6	3083 3289 00
		3	18	24	7.7	3083 4017 00
		3	24	31	9.5	3083 4017 10
4	Asphalt cutter	4½	11	18	7.9	3083 4019 00
5	Digging chisel	3	15	21	9.3	3083 3291 00
6	Digging spade	5	13	19	8.4	3083 3292 00
7	Clay spade	5½	15	21	11.0	3083 3293 00
8	Wedge chisel	2	16	22	11.0	3083 3294 00
9	Shaft for tamping pad	-	9	16	6.2	3083 3269 00
10	Tamping pad, round	7	-	-	15.9	3083 3301 00
11	Tamping pad, square	6	-	-	18.3	3083 3302 00

No.	Description	W (in.)	L (in.)	L _T (in.)	Wt (lb)	Part number
		8	-	-	18.7	3083 3197 00
12	Driving pad	4 $\frac{3}{4}$	-	-	16.8	3376 1120 79
		6	-	-	20.3	3376 1120 77
13	Driver blank	3	-	-	7.7	9245 2827 10

US standard hexagon 1 $\frac{1}{4}$ in. x 6 in. (32 x 152 mm)



No.	Description	W (in.)	L (in.)	L _T (in.)	Wt (lb)	Part number
1	Moil point	-	14	20	7.3	3083 3285 00
		-	18	24	8.8	3083 4000 10
		-	24	30	11.0	3083 4000 20
2	Narrow chisel	1 $\frac{3}{8}$	14	20	7.3	3083 3286 00
		1 $\frac{3}{8}$	18	24	8.8	3083 4001 10
		1 $\frac{3}{8}$	24	30	11.0	3083 4001 20
3	Wide chisel	3	15	21	7.7	3083 3295 00
		3	18	24	8.8	3083 4002 00
		3	24	31	11.2	3083 4002 10
4	Asphalt cutter	4 $\frac{1}{2}$	12	19	8.8	3083 4004 00
5	Digging chisel	3	15	21	9.7	3083 3297 00
6	Digging spade	5	13	19	9.5	3083 3298 00
7	Clay spade	5 $\frac{1}{2}$	15	21	11.9	3083 3299 00
8	Wedge chisel	2	16	22	12.1	3083 3300 00
9	Shaft for tamping pad	-	9	16	6.8	3083 3287 00
10	Tamping pad, round	7	-	-	15.9	3083 3301 00
11	Tamping pad, square	6	-	-	18.3	3083 3302 00
		8	-	-	18.7	3083 3197 00
12	Driving pad	4 $\frac{3}{4}$	-	-	16.8	3376 1120 79
		6	-	-	20.3	3376 1120 77
13	Driver blank	3	-	-	7.7	9245 2827 10

Accessories

Hose rolls

Metric

Description	Inner diameter (mm)	Thickness (mm)	Maximum working pressure (bar)	Length of roll (m)	Weight (kg)	Part number
Red-X hose roll	19	2.0	20	60	11	8900 0050 10
Red-X hose roll	19	2.0	20	100	18	8900 0050 11
Red-X hose roll	19	2.0	20	200	36	8900 0050 12
Red-X hose roll	25	2.5	20	60	15	8900 0050 20
Red-X hose roll	25	2.5	20	100	25	8900 0050 21
Red-X hose roll	25	2.5	20	200	50	8900 0050 22

Imperial

Description	Inner diameter (in.)	Thickness (in.)	Maximum working pressure (psi)	Length of roll (ft)	Weight (lb)	Part number
Red-X hose roll	$\frac{3}{4}$	$\frac{5}{64}$	290	195	24.3	8900 0050 10
Red-X hose roll	$\frac{3}{4}$	$\frac{5}{64}$	290	325	39.7	8900 0050 11
Red-X hose roll	$\frac{3}{4}$	$\frac{5}{64}$	290	650	79.4	8900 0050 12
Red-X hose roll	1	$\frac{3}{32}$	290	195	33.1	8900 0050 20
Red-X hose roll	1	$\frac{3}{32}$	290	325	55.1	8900 0050 21
Red-X hose roll	1	$\frac{3}{32}$	290	650	110.2	8900 0050 22

Pre-mounted universal hoses with claw couplings

Metric

Description	Inner diameter (mm)	Thickness (mm)	Maximum working pressure (bar)	Length of roll (m)	Weight (kg)	Part number
Red-X universal hose	19	2.0	20	20	4.5	8900 0050 09
Red-X universal hose	25	2.5	20	20	6.0	8900 0050 23

Imperial

Description	Inner diameter (in.)	Thickness (in.)	Maximum working pressure (psi)	Length of roll (ft)	Weight (lb)	Part number
Red-X universal hose	$\frac{3}{4}$	$\frac{5}{64}$	290	50	8.8	8900 0050 08
Red-X universal hose	1	$\frac{3}{32}$	290	50	11.0	8900 0050 24

Water separator

Metric

Description	Hose connection (mm)	Air flow (l/s)	Weight (kg)	Part number
Water separator (¾ in. BSP)	20	61	0.8	8900 0050 00

Imperial

Description	Hose connection (in.)	Air flow (foot ³ /min)	Weight (lb)	Part number
Water separator (¾ in. NPT)	¾	130	1.8	8900 0050 01

Lubricator

Metric

Description	Hose connection (mm)	Air flow (l/s)	Oil volume (l)	Weight (kg)	Part number
Lubricator 1300 (1 in. BSP)	25	15-140	1.3	3	8900 0050 02

Imperial

Description	Hose connection (in.)	Air flow (foot ³ /min)	Oil volume (US gallon)	Weight (lb)	Part number
Lubricator 43 (1 in. NPT)	1	32-300	0.34	6.6	8900 0050 07

CP airolene plus tool oil

Metric

Description	Oil volume (l)	Part number
5 l container	5	8099 0202 49
4 x 5 l container	20	8099 0202 51

Imperial

Description	Oil volume (US gallon)	Part number
1.32 US gallon container	1.32	8099 0202 49
4 x 1.32 US gallon container	5.28	8099 0202 51

